



VERIZON ORDERING GUIDE

Amphenol

NETWORK SOLUTIONS™

FIBER | POWER | RACKS

Verizon Wireless Ordering Guide

Table of Contents

Racks and cable managers 6

Power distribution 11

Fiber distribution 12

Sales team information 143

List of Figures

Fig. 1: VZW PNW Configuration 4

Fig. 2: Part No. 142256-400 7

Fig. 3: Part No. 142256-401 8

Fig. 4: ACCE-4DX-FSBLK 9

Fig. 5: ACCE-6DX-FSXXX 10

Product specifications and descriptions in this document are subject to change without notice. For more information, visit amphenol-ns.com or contact your Amphenol Network Solutions Director of Strategic Accounts.
All trademarks identified by ® or ™ are registered trademarks or trademarks, respectively, of Telect, Inc.
© 2019 Amphenol Network Solutions | All rights reserved

SOLUTIONS APPROVED FOR VERIZON



SECONDARY POWER DISTRIBUTION



FIBER DISTRIBUTION



CPRI MONITORING



WAVETRAX™



RACK



CABLE MANAGEMENT

SECONDARY POWER DISTRIBUTION

- GMT, TPA fuse panels and circuit breakers
- Ranges from 100A to 600A
- Fuses and breakers to complement power panels

FIBER DISTRIBUTION

- C2E, C2X, LCX, C2LINX, LTX panels
- MPO cassettes, modules
- 1RU, 2RU, 4RU
- Up to 576 terminations

WAVETRAX FIBER RACEWAY

- End-to-end solutions for fiber raceways
- System-wide selection of parts
- 2", 4", 6", 12", 24" widths
- Proprietary Express™ T and competitive adapters

TAPs

- Highest density circuit-level monitoring with cable management
- Non-disruptive monitoring ports for packet broker
- 1RU, 2RU, 3RU, & 4RU with total front access or front/rear monitoring

RACK-BASED CABLE MANAGEMENT

- Horizontal*
- Top/bottom 1RU troughs
 - 12", 23" 1RU, 1/2RU cable manager
- Vertical*
- 4", 6", 10" widths with cable-management spools
 - Black and telco grey

Verizon Wireless Ordering Guide

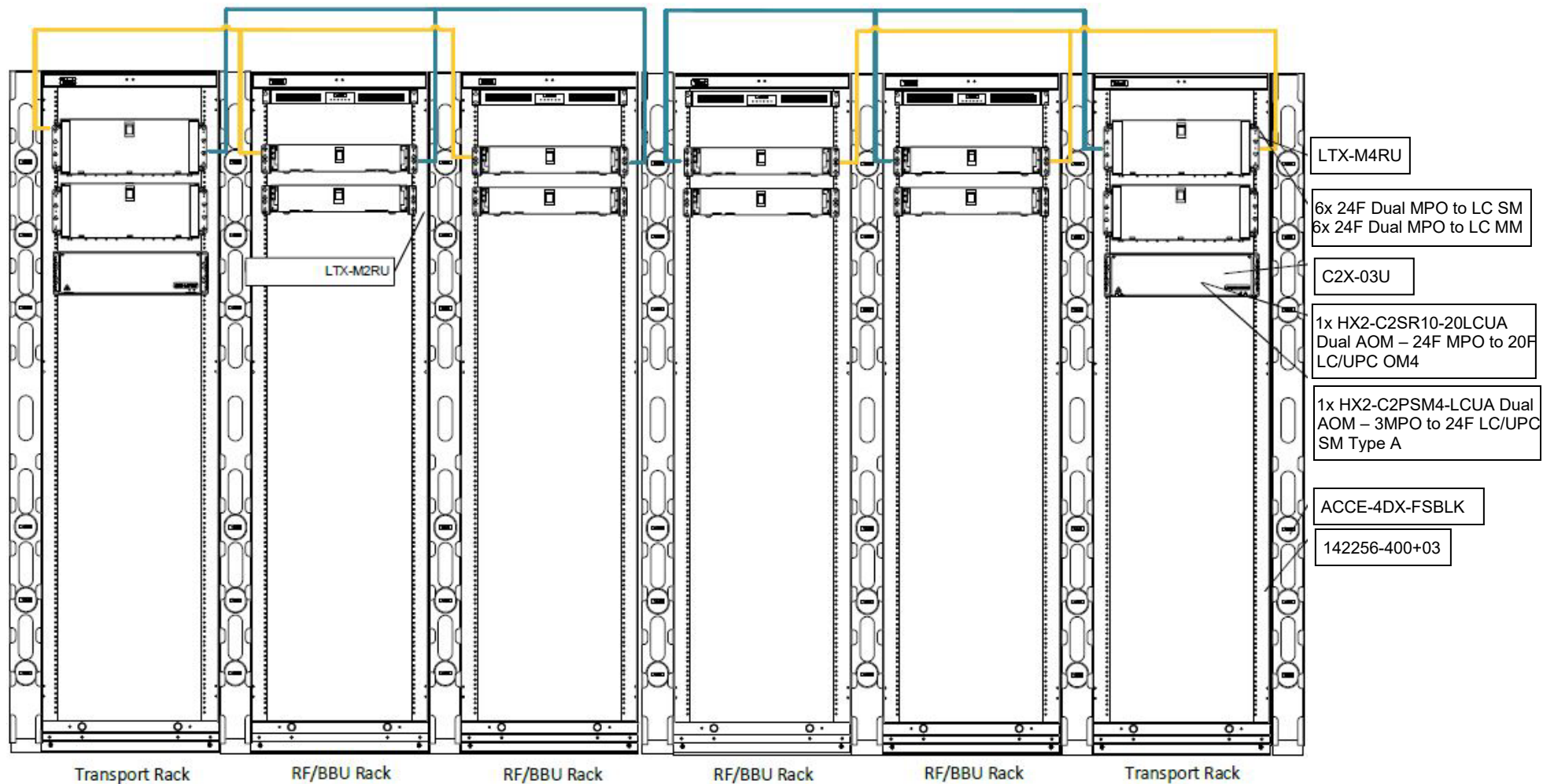


Fig. 1: VZW PNW 6 Rack Configuration

Verizon Wireless Ordering Guide

RACK 1 – PALLET 1:

1X 142256-400+03
 2X ACCE-4DX-FSBLK (BOTH SIDES)
 2X LTX-M4RU (42-39, 37-34RU)
 18X 056-MPO-LV212 (HALF THE FIRST LTX CHASSIS, FILL THE SECOND)
 6X 056-MPO-5I212 (HALF THE FIRST LTX CHASSIS)
 1X C2X-03U (32-30RU)
 1X HX2-C2SR10-20LCUA (C2X CHASSIS)
 10X C2X-BLANK (C2X CHASSIS)
 1X HX2-C2PSM4-LCUA-F (C2X)

RACK 2 – PALLET 2:

1X 142256-400+03
 1X ACCE-4DX-FSBLK (RIGHT SIDE)
 1X HPGMT15 (44RU)
 2X LTX-M2RU (40-39, 37-36RU)
 9X 056-MPO-LV212 (HALF THE FIRST LTX CHASSIS, FILL THE SECOND)
 3X 056-MPO-5I212 (HALF THE FIRST LTX CHASSIS)

RACK 3 – PALLET 3:

1X 142256-400+03
 1X ACCE-4DX-FSBLK (RIGHT SIDE)
 1X HPGMT15 (44RU)
 2X LTX-M2RU (40-39, 37-36RU)
 9X 056-MPO-LV212 (HALF THE FIRST LTX CHASSIS, FILL THE SECOND)
 3X 056-MPO-5I212 (HALF THE FIRST LTX CHASSIS)

SHIP ALL OTHER ITEMS LOOSE WITH RACKS

RACK 4 – PALLET 4:

1X 142256-400+03
 1X ACCE-4DX-FSBLK (RIGHT SIDE)
 1X HPGMT15 (44RU)
 2X LTX-M2RU (40-39, 37-36RU)
 9X 056-MPO-LV212 (HALF THE FIRST LTX CHASSIS, FILL THE SECOND)
 3X 056-MPO-5I212 (HALF THE FIRST LTX CHASSIS)





RACK 5 – PALLET 5:

1X 142256-400+03
 1X ACCE-4DX-FSBLK (RIGHT SIDE)
 1X HPGMT15 (44RU)
 2X LTX-M2RU (40-39, 37-36RU)
 9X 056-MPO-LV212 (HALF THE FIRST LTX CHASSIS, FILL THE SECOND)
 3X 056-MPO-5I212 (HALF THE FIRST LTX CHASSIS)

RACK 6 – PALLET 6:

1X 142256-400+03
 2X ACCE-4DX-FSBLK (RIGHT SIDE)
 2X LTX-M4RU (42-39, 37-34RU)
 12X 056-MPO-LV212 (HALF THE FIRST LTX CHASSIS, FILL THE SECOND)
 6X 056-MPO-5I212 (HALF THE FIRST LTX CHASSIS)
 1X C2X-03U (32-30RU)
 1X HX2-C2SR10-20LCUA (C2X CHASSIS)
 10X C2X-BLANK (C2X CHASSIS)
 1X HX2-C2PSM4-LCUA-F (C2X)

FIBER CABLE BREAKDOWN

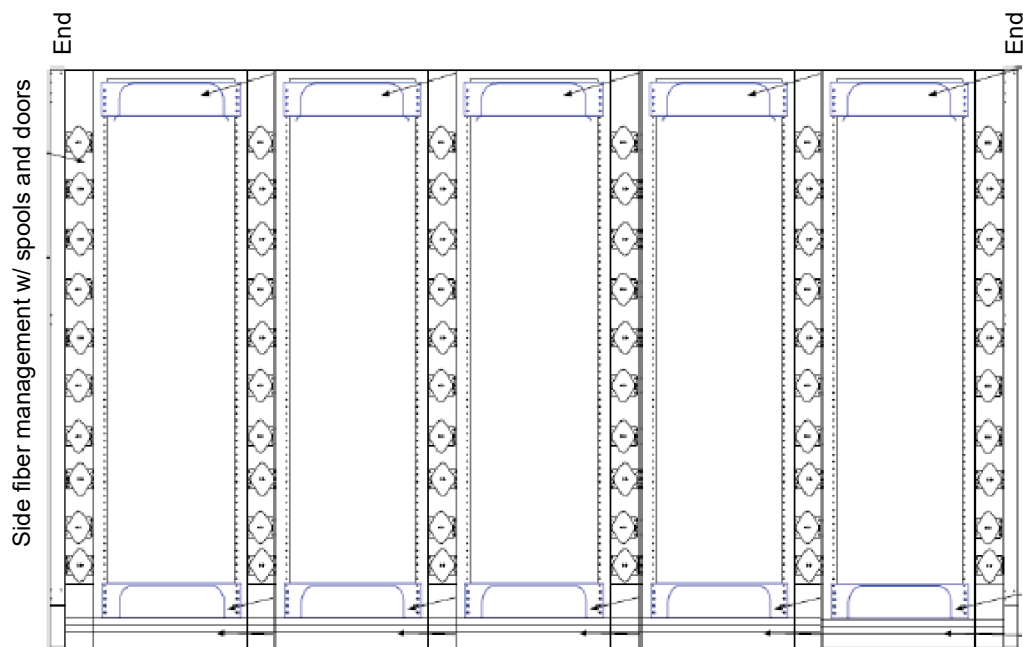
| Color | QTY | Length (m) | Description |
|---|-----|------------|-----------------------------|
|  | 24 | 4 | 12-Fiber, SM, MPO, Method B |
|  | 24 | 3 | 12-Fiber, SM, MPO, Method B |
|  | 12 | 4 | 12-Fiber, MM, MPO, Method B |
|  | 12 | 3 | 12-Fiber, MM, MPO, Method B |

VZW PNW 6 Rack Configuration

Bill Of Materials

| Select Part Number | Description | Quantity |
|-----------------------|---|----------|
| 142256-400+03 | 17.75" SEISMIC RACK NETWORK BAY, EIA-U | 6 |
| HPGMT15 | 100A MAX,DUAL 15/15 20A GMT,STUD/SCREW,R CVR,UNIVERSAL VDC,BAY ALARM,1RU,UNIVERSAL MOUNT | 4 |
| LTX-M2RU | LTX 2RU CHASSIS 72 FIBER CAPACITY | 8 |
| LTX-M4RU | LTX 4RU CHASSIS, 72/96/144 FIBER CAPACITY | 4 |
| ACCE-4DX-FSBLK | CABLE MANAGER 4" W X 8" D, SPOOL MTG, GEN OPENINGS | 7 |
| 01465-02 | ISO MAT'L 19" FOR NETBAY (FULL BASE PAD) | 6 |
| 02323-04 | INTERGRATED ANCHOR KIT 7' BAY, TORQUE NUT, STUD, ROHS | 6 |
| 056-MPO-LV212-F | FOC MOD:SM DUAL MPO TO LC/UPC 24-PORT | 72 |
| 056-MPO-5I212-F | FOC MOD:MM (0M4) DUAL MPO TO LC/UPC 24-PORT | 24 |
| F112M-AA-M004-PTPT-2B | Riser SM 8/125, 12F, Mdist, MPO SM (Female), W/Ptail TO MPO SM (Female), PolB, 4M | 24 |
| F112M-AA-M003-PTPT-2B | Riser SM 8/125, 12F, Mdist, MPO SM (Female), W/Ptail TO MPO SM (Female), PolB, 3M | 24 |
| FR12M-BB-M004-PTPT-2B | CA ASSY: RISER MM 50/125 (0M4), 12 FIBER, MICRODISTR, MPO MM (UPC) FEMALE, TO MPO MM (UPC) FEMALE, 4 METERS, MPO/MTP ULTRA LOW LOSS 2MM, POLARITY B, ROHS | 12 |
| FR12M-BB-M003-PTPT-2B | CA ASSY: RISER MM 50/125 (0M4), 12 FIBER, MICRODISTR, MPO MM (UPC) FEMALE, TO MPO MM (UPC) FEMALE, 3 METERS, MPO/MTP ULTRA LOW LOSS 2MM, POLARITY B, ROHS | 12 |
| C2X-03U | C2X CHASSIS, 3RU, EMPTY, HOLDS UP TO 12 TRAYS | 2 |
| HX2-C2SR10-20LCUAF | FOC DUAL C2 AOM: SR10, 24F MPO TO 20F LC/UPC 0M4, WITH TRAY | 2 |
| C2X-BLANK | C2X BLANKING PLATE, 1 TRAY | 20 |
| HX2-C2PSM4-LCUA-F | FOC DUAL C2 AOM: PSM4, 3MPO TO 24F LC/UPC, SM, TYPE A, WITH TRAY | 2 |

Verizon Wireless Ordering Guide



Bottom interbay transition trays

| Amphenol Network Solutions Part No. | Description |
|-------------------------------------|---|
| 142256-400+03 | 19" Seismic Network Bay, 17.75" Internal Mounting Width, EIA-U, Black |
| 142256-401+03 | 23" Seismic Network Bay, 21.75" Internal Mounting Width, EIA-U, Black |
| 142256-400+03VZW | 19" Seismic Rack Network Bay, EIA-U, VZW Cell Site Kit, Black |
| 142256-401+03VZW | 23" Seismic Rack Network Bay, EIA-U, VZW Cell Site Kit, Black |
| ACCE-4DX-FSBLK | Cable Manager: 4" W x 8" D, Spool MTG, GEN Openings |
| ACCE-6DX-FSBLK | Fiber Manager: 6" W x 8.25" D, Doors, Spools, Base |
| 065-EPPB-TOP-191 | Trough: Top, FO, 19", 1RU |
| 065-EPPB-BOT-191 | Trough: Bottom, FO, 19", 1RU |
| 065-EPPB-TOP-231 | Trough: Top, FO, 23", 1RU |
| 065-EPPB-BOT-231 | Trough: Bottom, FO, 23", 1RU |
| ACCE-10DX-DSBLK | 10" Cable Manager, Double Sided, 10x84, Black |



NOTE: Ground bars, horizontal cable managers, tie-down bars, ISO pads, anchor kits and supporting materials available.

Verizon Wireless Ordering Guide

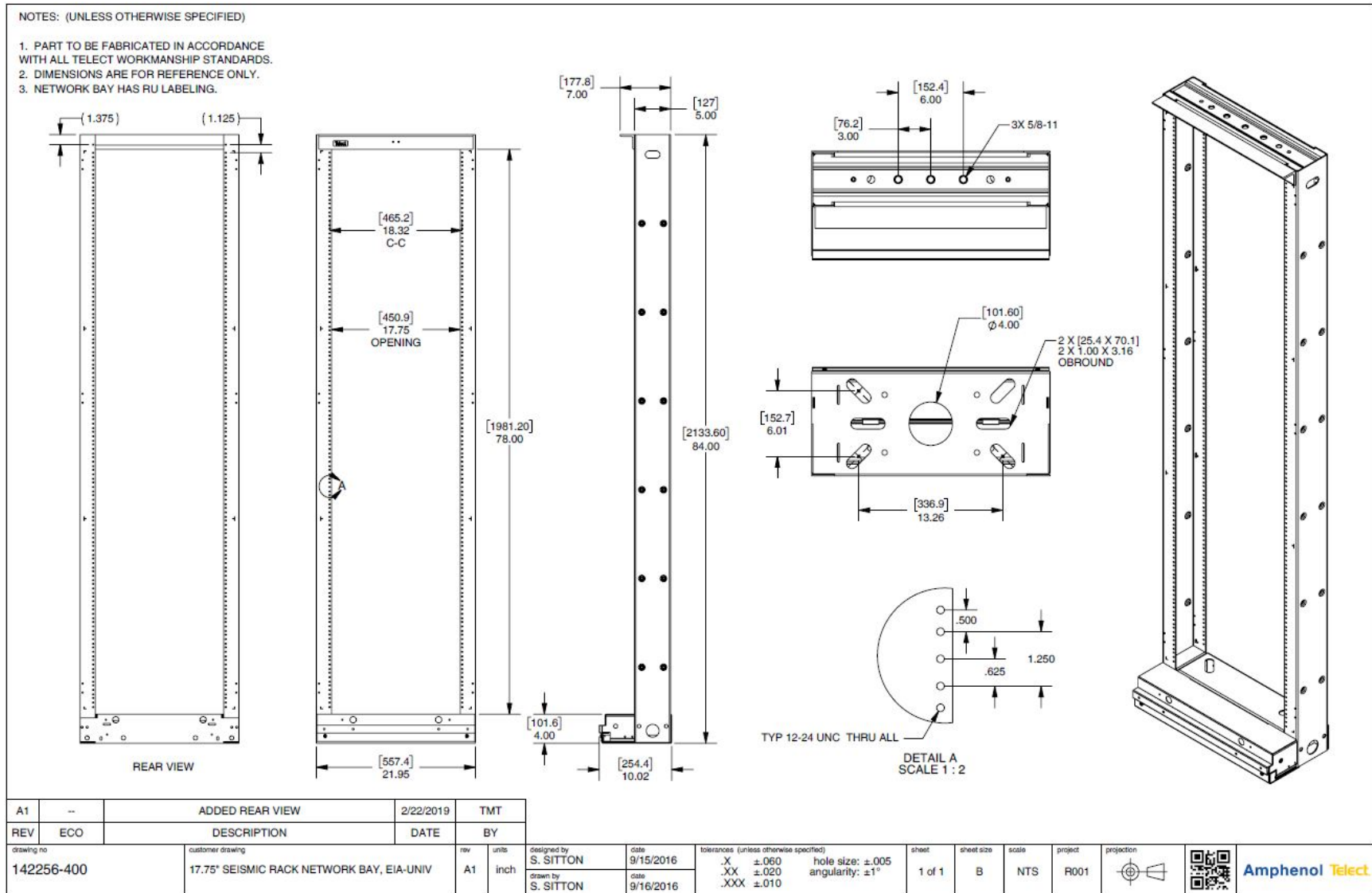
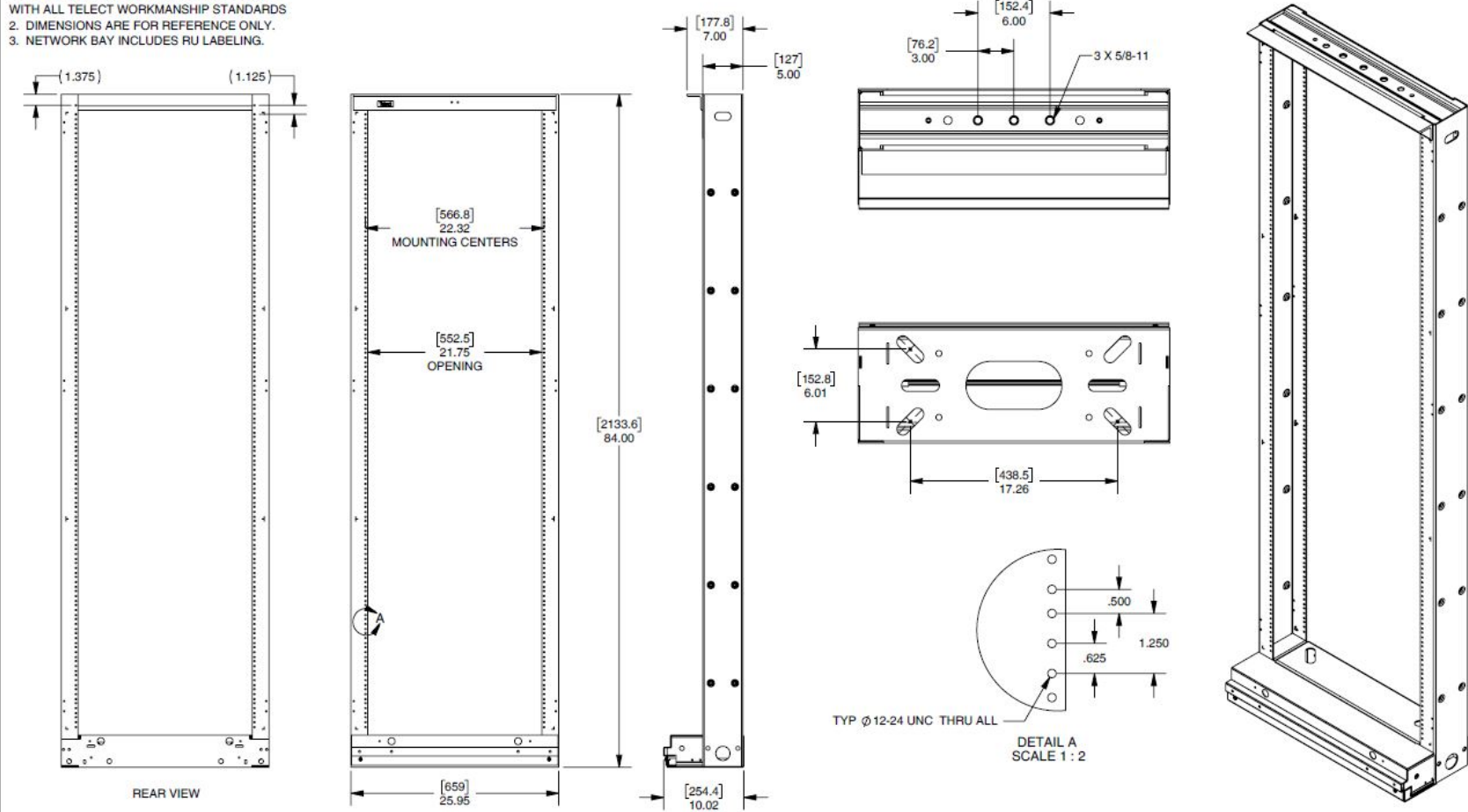


Fig. 2: 142256-400

Verizon Wireless Ordering Guide

NOTES: (UNLESS OTHERWISE SPECIFIED)

1. PART TO BE FABRICATED IN ACCORDANCE WITH ALL TELECT WORKMANSHIP STANDARDS
2. DIMENSIONS ARE FOR REFERENCE ONLY.
3. NETWORK BAY INCLUDES RU LABELING.



| REV | ECO | DESCRIPTION | DATE | BY |
|-----|-----|-----------------|-----------|-----|
| A1 | -- | ADDED REAR VIEW | 2/22/2019 | TMT |

| drawing no | fabrication drawing | rev | units | designed by | date | tolerances (unless otherwise specified) | hole size | angularity | sheet | sheet size | scale | project | projection | QR Code | Amphenol Telect |
|------------|---|-----|-------|-------------|-----------|---|-----------|------------|--------|------------|-------|---------|------------|---------|-----------------|
| 142256-401 | 21.75" SEISMIC RACK NETWORK BAY BASE (84" H), EIA-U | A1 | inch | S. SITTON | 9/15/2016 | .X ±.060 .XX ±.020 .XXX ±.010 | ±.005 | ±1° | 1 of 1 | B | NTS | R001 | | | |

Fig. 3: 142256-401

Verizon Wireless Ordering Guide

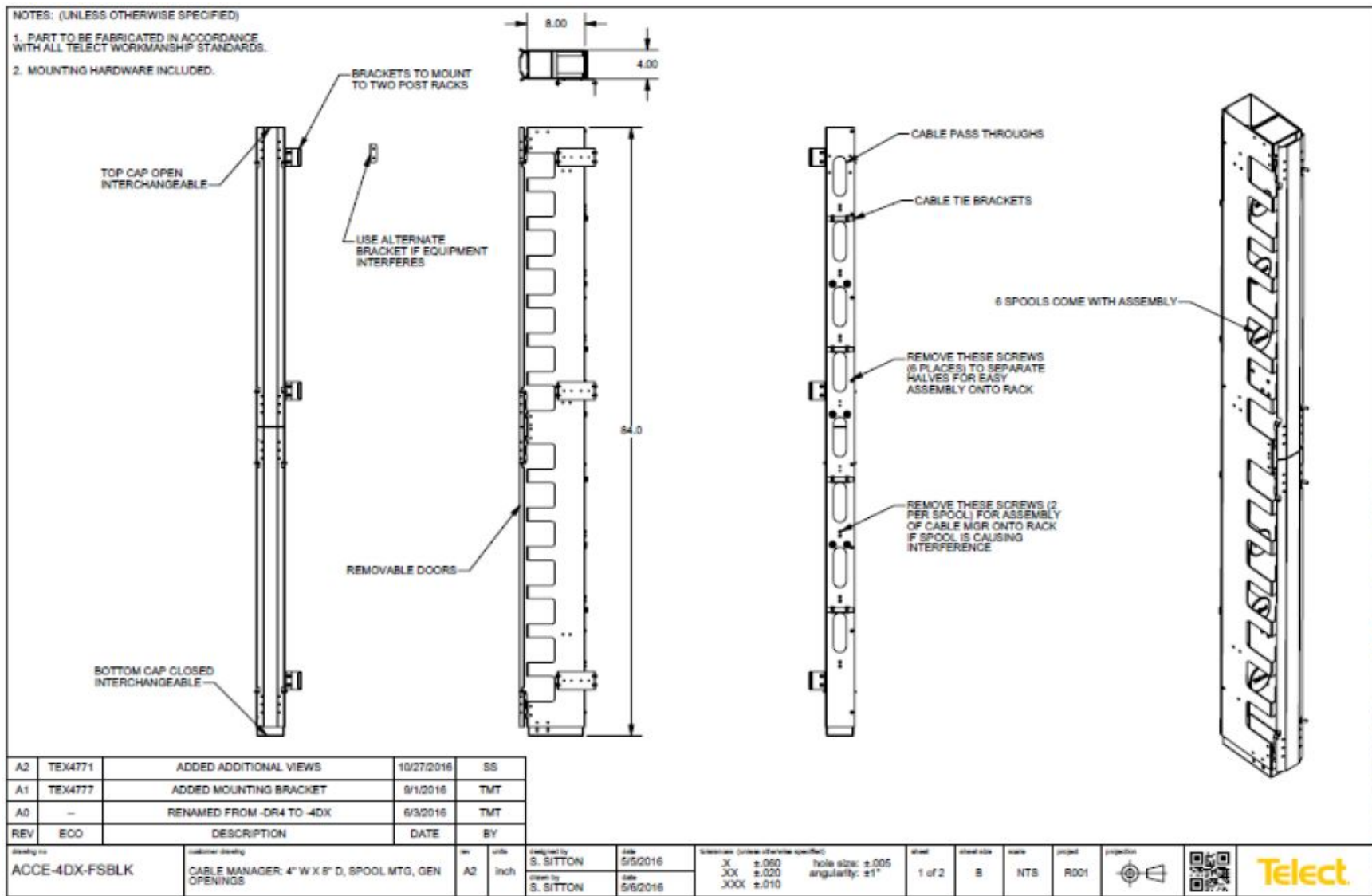


Fig. 4: ACCE-4DX-FSBLK

Verizon Wireless Ordering Guide

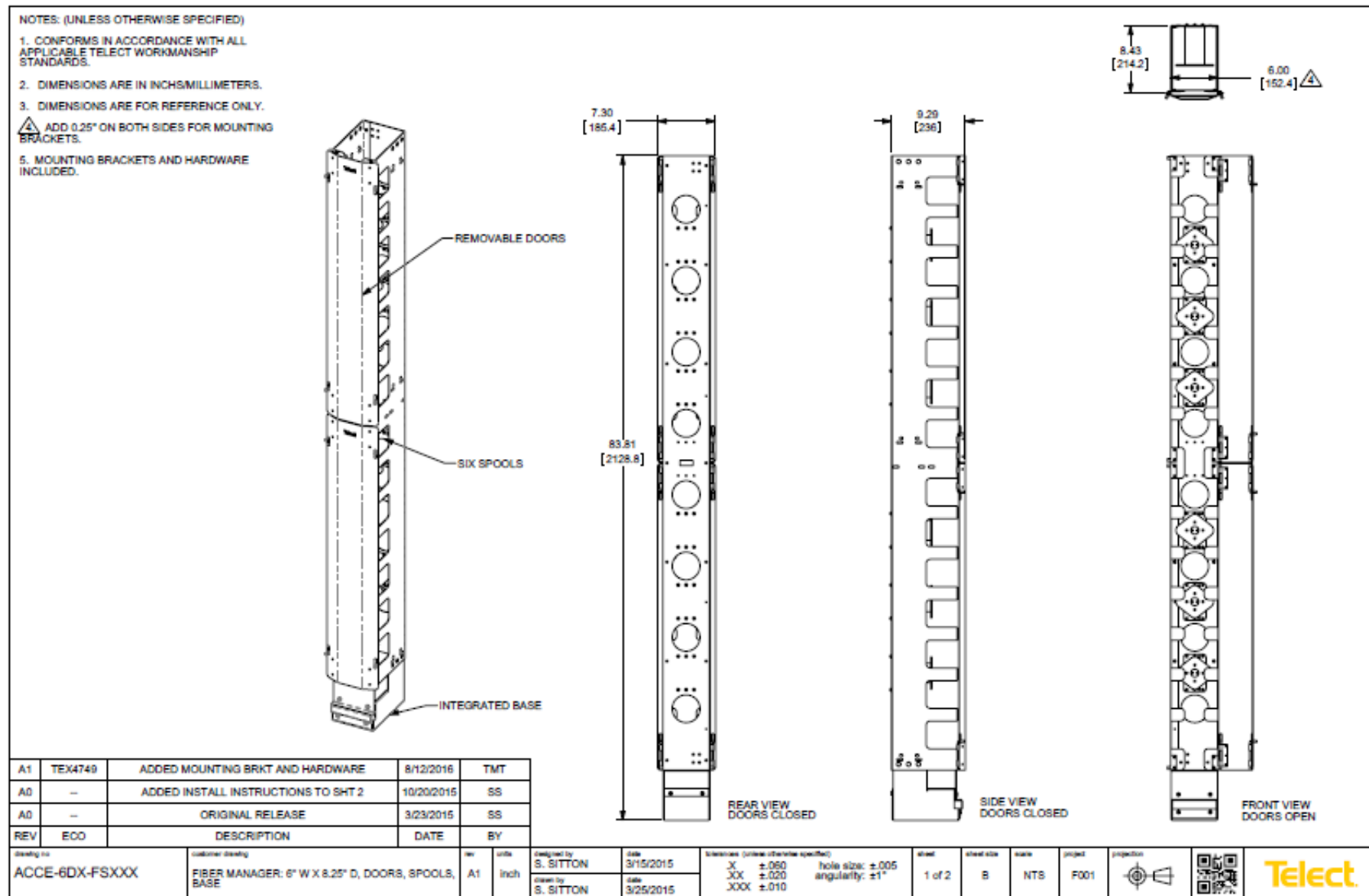


Fig. 5: ACCE-6DX-FSXXX

Verizon Wireless Ordering Guide

Amphenol Network Solutions has Verizon-approved power panels ready for deployment in most applications, including central office, network edge, traditional low-current distribution and active high-current distribution.

Our GMT, KLM and TPA panels, or combination solutions provide advanced versatility and feature industry-leading reliability based on TL9000 metrics.

Options are available to fit almost any power specification and application.



HPGMT10

| Circuit Breaker Panels | | | |
|--|-------------|--|-----------------------|
| Description | Part Number | Fuse Capacity | Notes |
| Dual-feed 350A 6/5 fuses or circuit breakers + GMT fuses | 350CB06 | 6 TLS/TPS or circuit breakers, 5 GMT fuses | 3RU |
| Dual-feed 600A 8/5 fuses or circuit breakers + GMT fuse positions | 600CB08 | 8 TPC/TPS/TLS or breakers, 5 GMT fuses | 4RU |
| Dual-feed 600A 10/10 fuses or circuit breakers with 1-pole load straps | 600CB10-CL | 10 TPC/TLS/TPS or circuit breakers | 2RU horizontal inputs |
| Dual-feed 325A 8/8 fuses or circuit breakers | 300CB08 | 8 circuit breakers per feed | 1RU |
| Dual-feed 325A 8/8 circuit breaker connectorized | 300CB08-C | 60A circuit breakers | 1RU |

| High-Current TPA Fuse Panels | | | |
|--|----------------|-----------------|---------|
| Description | Part Number | Fuse Capacity | Notes |
| Dual-feed 350A 8/10 TPA/GMT | 009-8005-0810 | 50A TPA/15A GMT | 2RU |
| Dual-feed 200A 4/5 TPA/GMT | 009-8005-0404 | 50A TPA/15A GMT | 1RU |
| Dual-feed 200A 4/5 TPA/GMT | 009-8005-0404J | 50A TPA/20A GMT | 1RU |
| Dual-feed 200A 4/5 TPA/GMT with bay alarms | 009-8005-1404 | 50A TPA/15A GMT | 1RU |
| Dual-feed 260A 4/20 TPA/GMT | 009-8005-0420 | 50A TPA/15A GMT | 2RU |
| Dual-feed 100A 4/4 TPA/GMT | 009-8005-3404 | 50A TPA/15A GMT | -48 VDC |
| Dual-feed 250A 8/8 TPA Connectorized | 250TPA08-C-16F | 50A TPA | 1RU |

| Intermediate-Current KLM/KTK Fuse Panels | | | |
|--|---------------|-----------------|-------|
| Description | Part Number | Fuse Capacity | Notes |
| Dual-feed 100A 4/4 KLM/GMT | 009-8004-0104 | 30A KLM/15A GMT | 1RU |
| Dual-feed 100A KLM/GMT with load sharing | 009-8004-0124 | 30A KLM/15A GMT | 1RU |
| Dual-feed 200A 8/8 KLM/GMT | 009-8004-0208 | 20A KLM/15A GMT | 2RU |
| Dual-feed 100A 5/5 KLM-only | 009-8004-0105 | 30A KLM | 1RU |

| Low-Current GMT Fuse Panels | | | |
|---|-------------|---------------|-------------------|
| Description | Part Number | Fuse Capacity | Notes |
| Dual-feed 100A 10/10 GMT | HPGMT10 | 20A GMT | 1RU |
| Dual-feed 100A 15/15 GMT | HPGMT15 | 20A GMT | 1RU |
| Dual-feed 100A 20/20 GMT | HPGMT20 | 20A GMT | 23" mounting only |
| Dual-feed 100A 10/10 GMT, front access | HPGMT10FA | 20A GMT | 2RU |
| Dual-feed 60A 10/10 GMT, front access | GMT10FA | 20A GMT | 23" mounting only |
| Dual-feed front access 10/10-position panel | GMT05FA | 15A GMT | 1RU |
| Single-feed, 20 position panel | HPGMT20S | 20A GMT | 1RU |



250TPA08-C-16F front view

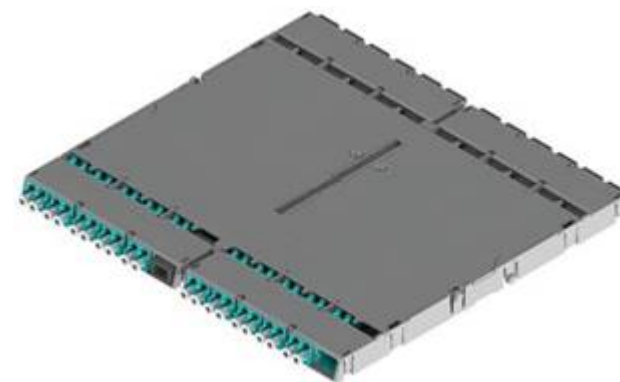


250TPA08-C-16F rear view

Verizon Wireless Ordering Guide

Fiber Breakout Solution 10x10 & 10x4

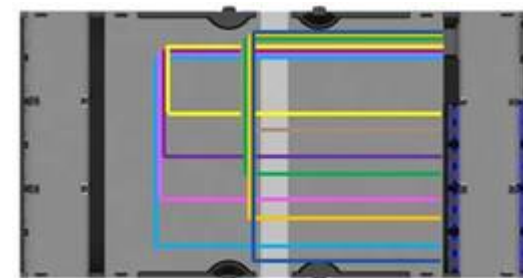
| Amphenol Network Solutions Part No. | Description |
|-------------------------------------|---|
| HX-C2X-01U | C2X Chassis, 1RU, Holds 8 Modules, 4 Dual Modules |
| HX-C2X-02U | C2X Chassis, 2RU, Holds 16 Modules, 8 Dual Modules |
| HX-C2X-03U | C2X Chassis, 3RU, Holds 24 Modules, 12 Dual Modules |
| HX-C2X-04U | C2X Chassis, 4RU, Holds 32 Modules, 16 Dual Modules |
| C2E-01U | C2E Chassis, 1RU, Holds 12 Modules, 6 Dual Modules |
| C2E-02U | C2E Chassis, 2RU, Holds 24 Modules, 12 Dual Modules |
| C2E-04U | C2E Chassis, 4RU, Holds 48 Modules, 24 Dual Modules |
| HX2-SR10-20LCUAFA | DUAL C2 AOM: SR10, 24F MPO TO 20F LCU, OM4, UNIV, FRONT TERMINATIONS, W/TRAY, DUAL MODULE |
| HX2-SR10-20LCU | DUAL C2 AOM: SR10, REAR 24F MPO TO 20F FRONT LCU, OM4, W/TRAY, 10x10, MM, UNIV, DUAL MODULE |
| FR24M-BB-M001-3A | MM, 24F, MPO (24)(F) TO MPO (24)(F), 1M, 3MM JCKT, A POL |
| FR24M-BB-M002-3A | MM, 24F, MPO (24)(F) TO MPO (24)(F), 2M, 3MM JCKT, A POL |
| FR7-LLG-M003-DA | MM, 1.2MM DPLX, LCU-LCU, 3M, DPLX CLIP, MINI BOOT |
| HX-PSM4-LCUFA | C2 AOM, PSM4, 12F MPO TO 8F LCU, SM, TFA, W/TRAY, 10X4, SM, UNIV, SINGLE MODULE |
| HX2-3SR4-LCU | DUAL C2 AOM: SR4, 3 REAR 12F MPO TO 8F FRONT LCU, OM4, UNIV, W/TRAU, 10X4, MM, DUAL MODULE |
| F112M-AA-M001-2B | SM BIF, 12F, MPO(12)(F) TO MPO(12)(F), 1M, 2MM JCKT, B POL |
| F112M-AA-M002-2B | SM BIF, 12F, MPO(12)(F) TO MPO (12)(F), 2M, 2MM JCKT, B POL |
| F17-LLG-M003-DA | BIF SM, 1.2MM DPLX, LCU-LCU, 3M, DPLX CLIP, MINI BOOT |



HX2-SR10-20LCUAFA



C2E-02U



HX-PSM4-LCUFA

Verizon Wireless Ordering Guide

| Amphenol Network Solutions Part No. | Description |
|-------------------------------------|---|
| HX-C2E-04U | C2E Chassis, 4RU, Base-12, 16 Trays, 576 LC Connectors |
| HX-C2E-02U | C2E Chassis, 2RU, Base-12, 8 Trays, 288 LC Connectors |
| HX-C2E-01U | C2E Chassis, 1RU, Base-12, 3 Trays, 144 LC Connectors |
| HX-C2X-04U | C2X Chassis, 4RU, Holds 16 Modules, 432 LC Fibers |
| HX-C2X-03U | C2X Chassis, 3RU, Holds 12 Modules, 288 LC Fibers |
| HX-C2X-02U | C2X Chassis, 2RU, Holds 8 Modules, 192 LC Fibers |
| HX-C2X-01U | C2X Chassis, 1RU, Holds 4 Modules, 96 LC Fibers |
| HX-C2X-TRAY | C2X Empty Tray |
| HX-C2X-PLT-024LS | C2X Patch Plate, LC/UPC, Singlemode, Blue Adapter, 24 Port |
| HX-C2X-PLT-072LS | C2X Patch Plate, LC/UPC, Singlemode, Blue Adapter, 72 Port |
| HX-C2X-P281LM | C2X Patch Chassis, 3RU, 288 Fibers, LC/UPC, Multimode, Aqua |
| HX-C2X-P281LS | C2X Patch Chassis, 3RU, 288 Fibers, LC/UPC, Singlemode |
| HXC2X-P431LS-F | FOC C2X Patch Chassis, 4RU, 432 Fibers, LC/UPC, Singlemode |
| HX2-ML-24LCUA | Dual C2 AOM: 24 Fiber MPO, LC/UPC, SM, Breakout Cassette, A Polarity |
| HX-ML-12LCUA-F | FOC AOM, MPO: SM 12 Fiber MPO, LC/UPC, 12-Port, Method A Polarity, Ultra Low Loss |
| HX-PC-12LCMM | 12 Fiber Duplex LC Multimode, Aqua, Adapter Patch Module |
| HX-PC-12LCSU | 12 Fiber Duplex LC/UPC, Blue, Singlemode, Adapter Patch Module |
| H4000-CHS-24 | C2LINX Chassis, 4RU, 24 Trays, Holds 48 Cassettes |
| H2000-CHS-12 | C2LINX Chassis, 2RU, 12 Trays, Holds 24 Cassettes |
| H1000-CHS-06 | C2LINX Chassis, 1RU, 6 Trays, Holds 12 Cassettes |
| HX-MP-12LCUA | AOM, MPO: SM 12F MPO, LC/UPC, 12-port, Method A Polarity, Standard LOS |
| LTX-M4RU | LTX 4RU Chassis, 72/96/144 Fiber Capacity |
| LTX-M2RU | LTX 2RU Chassis, 72 Fiber Capacity |
| LTX-M1RU | LTX 1RU Chassis, 36 Fiber Capacity |
| 056-MPO-5I212 | MOD: MM (0M4) Dual MPO to LC/UPC, 24-port |
| 056-MPO-LV212 | MOD: SM Dual MPO to LC/UPC, 24-port |
| LCX-M4RU | LCX 4RU Chassis, Unloaded, 144 SC/UPC Ports |
| LCX-M2RU | LCX 2RU Chassis, 96 LC terminations or 48 SC terminations |
| LCX-M1RU | LCX 1RU Chassis, 48 LC terminations or 24 SC terminations |
| 055-0000-5010 | Patch Plate, 12 Port, LC/UPC |
| 055-0000-5210 | Patch Plate, 24 Port, LC/UPC Duplex |
| 055-0000-5012 | Patch Plate, 12 Port, LC Multimode |
| 055-0000-5090 | Patch Plate, 12 Port, LC/APC |
| 055-0000-6010 | Patch Plate, 6 Port, SC/UPC |
| 055-0000-6080 | Patch Plate, 8 Port, SC/UPC |

NOTE: Ask your Amphenol Network Solutions Strategic Account Director or Business Development Manager about the best fiber distribution solution for your application.



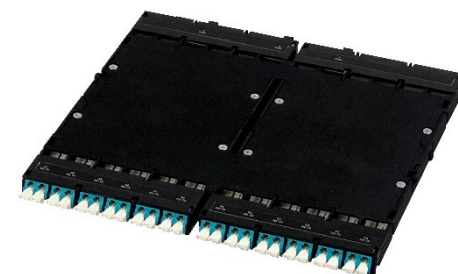
HX-C2E-04U

Verizon Wireless Ordering Guide

| Amphenol Network Solutions Part No. | Description |
|-------------------------------------|---|
| HX2-C2LR10-20LCUAF | DUAL C2 AOM: PSM10, 24F MPO TO 20F LC/UPC SM,WITH TRAY |
| HX2-C2LR10-20LCBFA | AOM,DUAL C2 AOM, SR10, FRONT 24F MPO TO 20F LC/UPC MM OM4, MALE, W/TRAY |
| HX2-C2SR10-20LCUAF | AOM, DUAL MODSR10: 24F MPO to 20F LC, MM (OM4), STRAIGHT |
| HX2-C2SR10-20LCBFA | AOM,DUAL C2 AOM,LR10,FRONT 24F MPO TO 20F LC/UPC SM, MALE, W/TRAY |
| HX2-C2PSM4-LCUA | DUAL C2 AOM: PSM4, 3MPO TO 24F LC/UPC, SM, TYPE A, WITH TRAY |
| HX2-C2PSM4-LCUBFA | AOM, C2 AOM, PSM4 , FRONT 12F MPO TO 8F LC/UPC SM , MALE, W/TRAY |
| HX2-C23SR4-LCUA | AOM, DUAL MOD: SR4, 3 12F MPO to 24F LC/UPC, MM OM4 |
| HX2-C23SR4-LCUBFA | AOM, C2 AOM SR4, FRONT 12F MPO TO 8F LC/UPC MM OM4, MALE, W/TRAY |
| FR24M-BB-M03-PTPT | MM (OM4), 24F MPO FEMALE to 24F MPO FEMALE, 3M, A POLARITY |
| FR24M-BB-M010-PTPT | MM (OM4), 24F MPO FEMALE to 24F MPO FEMALE, 10M, A POLARITY |
| FR24M-AA-M003-PTPT | SM, 24F MPO FEMALE to 24F MPO FEMALE, 3M, A POLARITY |
| FR24M-AA-M010-PTPT | SM, 24F MPO FEMALE to 24F MPO FEMALE, 10M, A POLARITY |
| FR12M-BB-M003-PTPT | MM (OM4), 12F MPO FEMALE to 12F MPO FEMALE, 3M, A POLARITY |
| FR12M-BB-M010-PTPT | MM (OM4), 12F MPO FEMALE to 12F MPO FEMALE, 10M, A POLARITY |
| FR12M-OO-M003-PTPT | SM, 12F MPO FEMALE to 12F MPO FEMALE, 3M, A POLARITY |
| FR12M-OO-M010-PTPT | SM, 12F MPO FEMALE to 12F MPO FEMALE, 10M, A POLARITY |
| FR7-CCG-M003-0 | 1.2MM (OM4) FIBER, LCU DUPLEX (w/clips) to LCU DUPLEX (w/clips), 3M |
| FR7-CCG-M010-0 | 1.2MM (OM4) FIBER, LCU DUPLEX (w/clips) to LCU DUPLEX (w/clips), 10M |
| FK7-CCG-M003-0 | 1.2SM, BIF, LC/UPC DUPLEX (w/clips) to LC/UPC DUPLEX (w/clips), 3M |
| FK7-CCG-M010-0 | 1.2SM, BIF, LC/UPC DUPLEX (w/clips) to LC/UPC DUPLEX (w/clips), 10M |
| HX-C2E-01U | C2E Chassis, 1RU, Base-12, 3 Trays, 144 LC Connectors |
| HX-C2E-02U | C2E Chassis, 2RU, Base-12, 8 Trays, 288 LC Connectors |
| HX-C2E-04U | C2X Chassis, 4RU, Holds 16 Modules, 432 LC Fibers |
| HX-C2X-04U | C2X Chassis, 4RU, Holds 16 Modules, 432 LC Fibers |
| HX-C2X-02U | C2X Chassis, 2RU, Holds 8 Modules, 192 LC Fibers |
| HX-C2X-01U | C2X Chassis, 1RU, Holds 4 Modules, 96 LC Fibers |
| HX-C2X-TRAY | C2X Empty Tray |
| HX8-ML-08LC4A | AOM BASE 8,MPO:MM 8F MPO, LC/UPC,8-PORT,METHOD A POLARITY, SR4 |
| HX8-ML-08LC4B | AOM BASE 8,MPO:MM 8F MPO, LC/UPC,8-PORT,METHOD B POLARITY, SR4 |
| HX8-ML-08LCUA | AOM BASE 8,MPO:SM 8F MPO, LC/UPC,8-PORT,METHOD A POLARITY, PSM4 |
| HX8-ML-08LCUB | AOM BASE 8,MPO:SM 8F MPO, LC/UPC,8-PORT,METHOD B POLARITY, PSM4 |
| HX-C2SR4-MPO1S2 | AOM,BASE8,OM4,MM,2 TAPS,MPO,TYPEB,70/30, SPLIT MON MPO, FEMALE |
| 056-MPO-51212 | 24 PORT LC/UPC WITH OM4 MM FIBER AND DUAL MPO |
| 056-MPO-51212 | MOD:MM(OM4) DUAL MPO TO LC/UPC 24-PORT |
| 056-MPO-5Q124 | MOD:SM MPO TO LC/UPC 24-PORT |
| 056-MPO-LV124 | MOD:MM (OM3) MPO TO LC/UPC 24-PORT |
| 056-MPO-LV212 | MOD:SM DUAL MPO TO LC/UPC 24-PORT |
| 058-MPO-51212 | MOD:MM(OM4) DUAL MPO TO LC/UPC 24-PORT |
| 058-MPO-5Q124 | MOD:SM MPO TO LC/UPC 24-PORT |
| 058-MPO-LV124 | MOD:MM (OM3) MPO TO LC/UPC 24-PORT |
| 058-MPO-LV212 | MOD:SM DUAL MPO TO LC/UPC 24-PORT |
| 058-MPO-GV112 | MOD:SM MPO TO LC/APC 12-PORT, TYPE A |
| 058-MPO-LV112 | MOD: SM MPO TO LC/UPC 12-PORT, TYPE A |
| LCX-M1RU | LCX 1RU CHASSIS FIBER CAPACITY |
| LCX-M2RU | LCX 2RU CHASSIS |
| LCX-M3RU | LCX 3RU CHASSIS FIBER CAPACITY |
| LCX-M4RU | LCX 4RU CHASSIS |



HX-C2SR4-MPO1S2

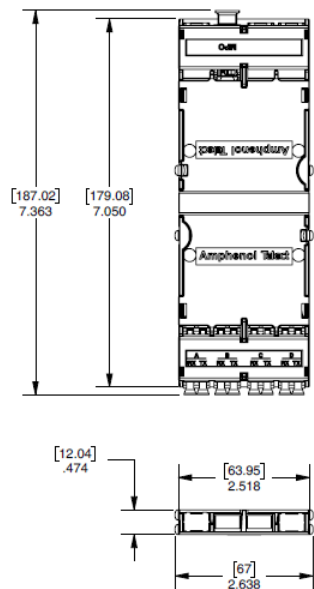


HX2-C2PSM4-LCUA

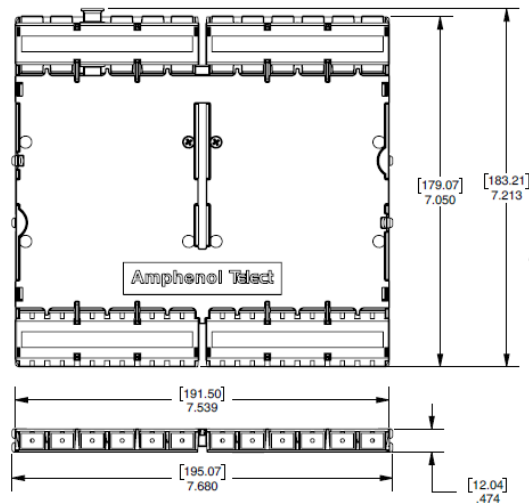
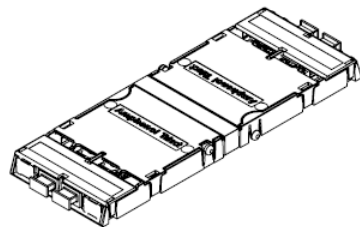


HX2-C2E-02U

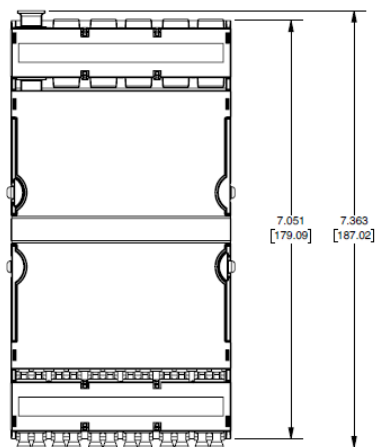
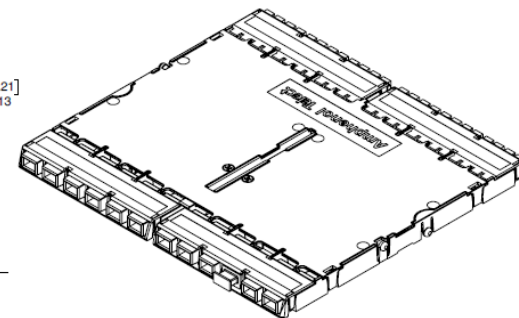
Verizon Wireless Ordering Guide



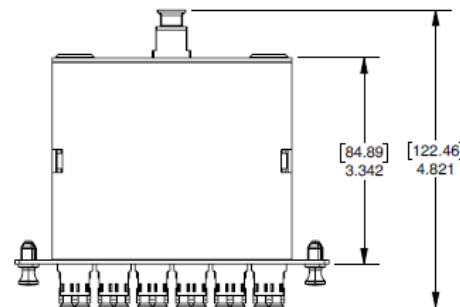
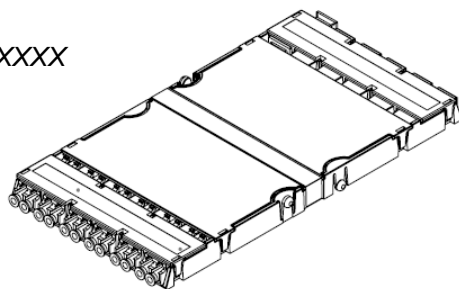
HX8-XXXX



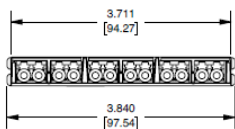
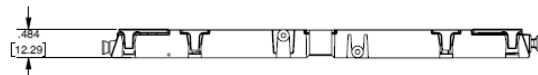
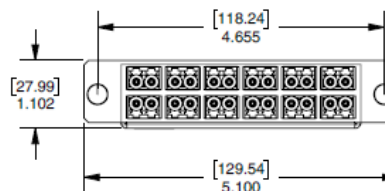
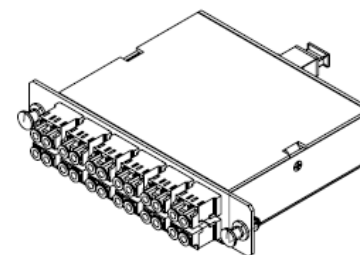
HX2-XXXX



HX-XXXX



058-XXXX



Verizon Wireless Ordering Guide

Sales Team Information

Brad VanBuskirk

Senior Director of Strategic Accounts
317.590.1000
brad.vanbuskirk@amphenol-ns.com

JD Smith

Senior Director of Strategic Accounts
832.289.2720
jd.smith@amphenol-ns.com

Hugo García

Market Manager
509.724.1313
hugo.garcia@amphenol-ns.com

Fred Serna

Senior Director of Strategic Accounts
972.740.3926
fred.serna@amphenol-ns.com

Heidi Kane

Director of Strategic Accounts
770.624.3601
heidi.slocum@amphenol-ns.com

Craig Ray

Sales Engineer
919.656.0469
craig.ray@amphenol-ns.com

Ray Hunt

Senior Director of Strategic Accounts
206.771.0215
ray.hunt@amphenol-ns.com

Traci Glyshaw

Senior Account Manager
Verizon Inside Sales Representative
509.926.6000
traci.glyshaw@amphenol-ns.com

Desiree Proctor

Director of Channel Relations and Marketing
509.344.7221
desiree.proctor@amphenol-ns.com